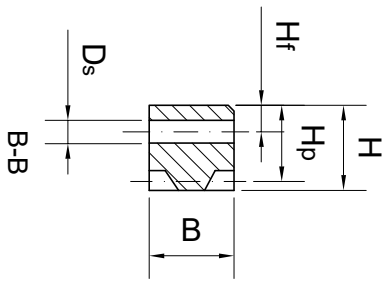
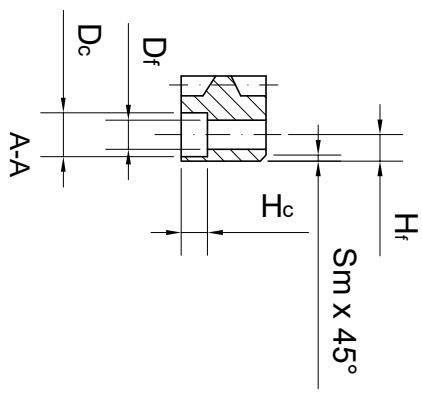
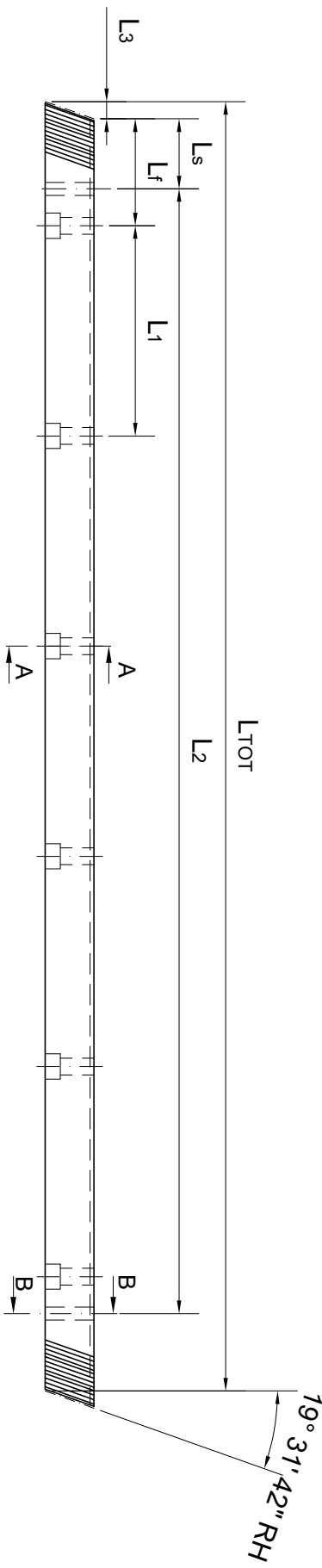


M	LTOT	L3	Lf	L1	Ls	B	H	Hf	Ds	Sm	Df	Dc	Hc	Hp	Z	L2	n°holes
6	1000	20.926	62.5	125	37.5	59	49	16	15.7	3	18	26	17	43	50	925	8



GENERAL TOLERANCE ISO 2768 - FH
INDEPENDENCE CRITERION ISO 8015

GAMBINI
meccanica

MATERIAL SAE 1141
HEAT - TREATMENT Induction-hardened teeth

SURFACE Ground
QUALITY 6
DATE 01 - 09 - 2021

ITEM NUMBER
1HR26R060100H

