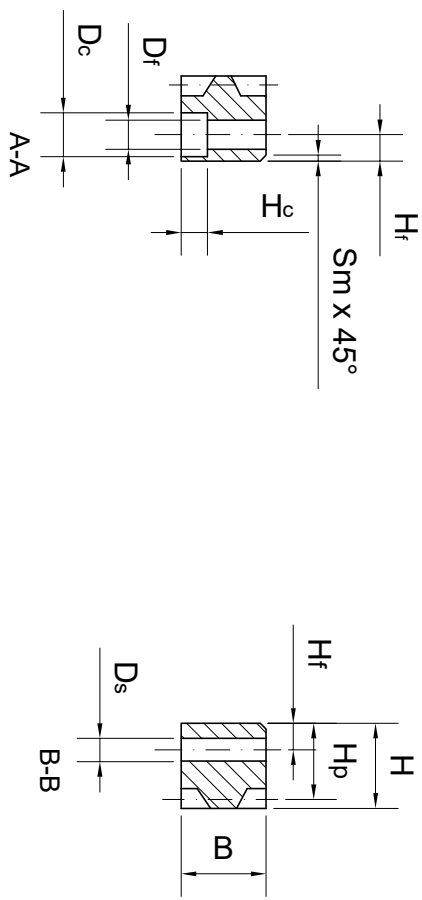
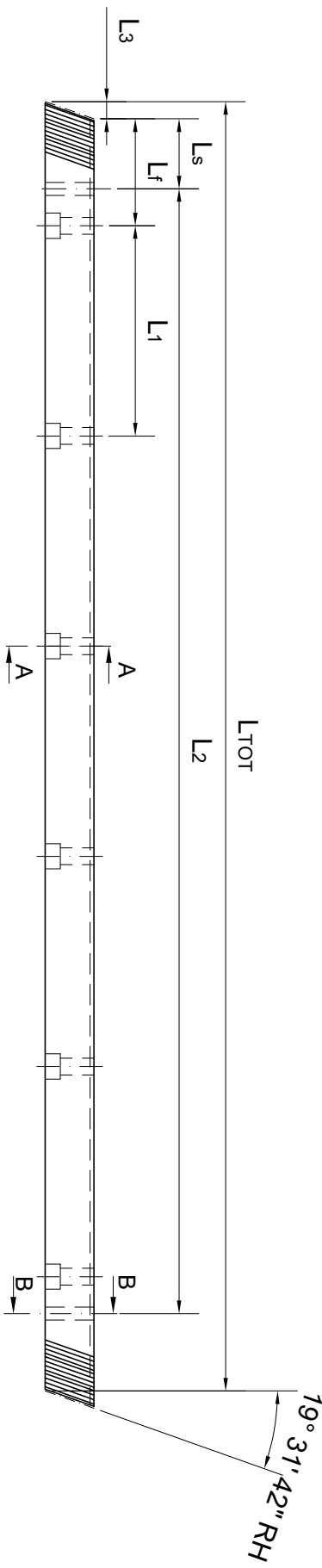


| | | | | | | | | | | | | | | | | | |
|---|------|-------|------|-----|-------|----|----|----|-----|----|----|----|----|----|-----|--------|---------|
| M | LTOT | L3 | Lf | L1 | Ls | B | H | Hf | Ds | Sm | Df | Dc | Hc | Hp | Z | L2 | n°holes |
| 2 | 1000 | 8.512 | 62.5 | 125 | 31.71 | 24 | 24 | 8 | 5.7 | 2 | 7 | 11 | 7 | 22 | 150 | 936.58 | 8 |



GENERAL TOLERANCE ISO 2768 - fH
INDEPENDENCE CRITERION ISO 8015

GAMBINI
mecanica

MATERIAL SAE 1141
HEAT - TREATMENT Induction-hardened teeth

SURFACE Ground
QUALITY 6
DATE 01 - 09 - 2021

ITEM NUMBER
1HR26R020100H

